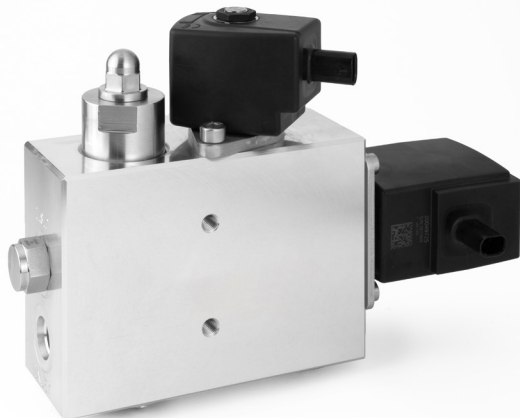


A875 Datasheet

PRESSURE REGULATOR FOR HYDROGEN VEHICLES

● Gas ● Liquid | ● Diaphragm ● Piston | ● Self-Venting ● Non-Venting | Max Inlet: 875 bar (12,690 psi) | Max Outlet: 30 bar (435 psi) | Cv 0.35 / 0.5



INTRODUCING THE A875...

The A875 is a single-bodied regulator that features mechanical pressure reduction paired with a state-of-the-art proportional control valve. This ensures precise gas flow management, essential for optimising hydrogen combustion engines.

The integrated pressure relief valve enhances safety and operational reliability in high-pressure systems. It also features an integrated solenoid operated outlet isolation valve with KOSTAL MLK1.2 2-pin coding A plugs on both proportional and solenoid valves for easy integration into automotive wiring systems.

SPECIFICATION

Max. Rated Inlet Pressure	875 bar (12,690 psi)
Outlet Ranges	Up to 30 bar (435 psi)
Design Proof Pressure	150% max. working pressure
Seat Leakage	In accordance with ANSI/FCI 70-3
Weight	2.4kg (5.3lbs)
Hydrogen Service Level	H35 or H70

STANDARD MATERIALS OF CONSTRUCTION

PART	MATERIALS
Body and Bonnet	Aluminium 6082T6 (UNS A96082) or ASTM A479 316/316L Stainless Steel (UNS S31600/S31603)
Main Valve Pin	ASTM A479 316/316L Stainless Steel (UNS S31600/S31603)
Seat	Acetal (POM)
Valve Spring	Elgiloy® (UNS R30003)
Sensor	ASTM A479 316/316L Stainless Steel (UNS S31600/S31603)
O-Rings	Low Temperature FKM AED (Viton)
Filter	10 and 30 Microns

Note: Pressure regulator rating may be limited by connection type, Cv and/or seat material. Contact the office for specific pressure or temperature requirements.

FEATURES AND BENEFITS

1 ELECTRONIC VALVES

For easy integration into automotive wirings systems.

2 INTEGRATED PRV

Enhances the safety in the event of downstream over pressure.

3 BALANCED MAIN VALVE

For improved control across the pressure range.

4 INTEGRATED FILTRATION

Offers excellent protection to sensitive internal components.

Product availability and specifications contained herein are subject to change without notice. Consult local distributor or factory for potential revisions and/or service related issues. Pressure Tech Ltd support with product selection recommendations only - it is the users responsibility to ensure the product is suitable for their specific application requirements.



PRESSURE TECH LTD

Unit 24, Graphite Way, Hadfield, Glossop, Derbyshire, UK, SK13 1QH

+44 (0)1457 899 307 | sales@pressure-tech.com | www.pressure-tech.com

DESIGNED, MANUFACTURED AND BUILT IN THE UK

© 2025 Pressure Tech Ltd. All Rights Reserved.

180225

PAGE:
1 OF 4

A875 Datasheet

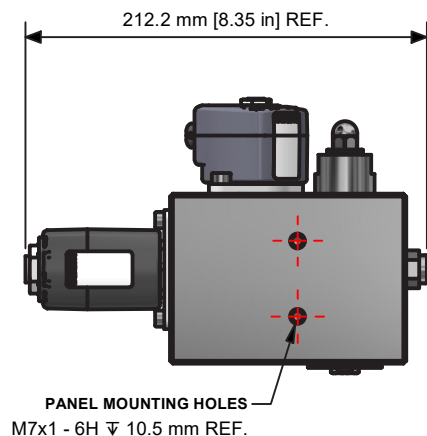
PRESSURE REGULATOR FOR HYDROGEN VEHICLES

☒ Gas
 ☒ Liquid
 ☒ Diaphragm
 ☒ Piston
 ☒ Self-Venting
 ☒ Non-Venting
 | Max Inlet: 875 bar (12,690 psi) | Max Outlet: 30 bar (435 psi) | Cv 0.35 / 0.5

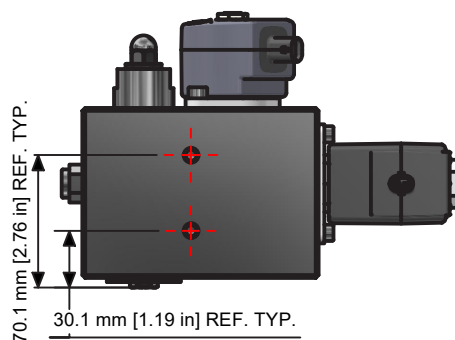
DRAWING AND INSTALLATION DIMENSIONS

Dimensions shown for standard configurations only – please contact the office for other options.

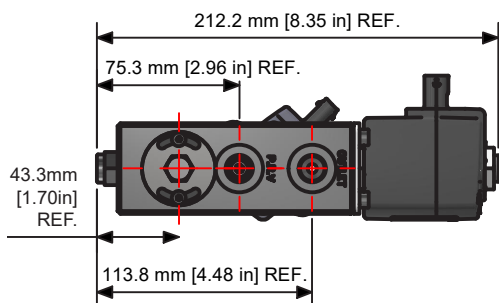
Side View



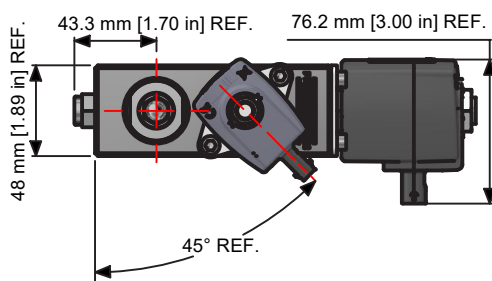
Side View



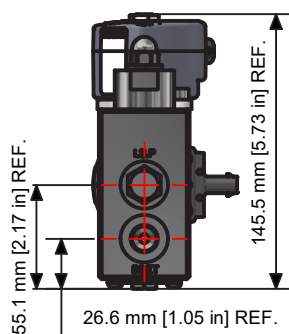
Base View



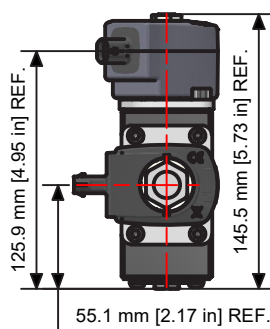
Top View



Front View



Back View



Product availability and specifications contained herein are subject to change without notice. Consult local distributor or factory for potential revisions and/or service related issues. Pressure Tech Ltd support with product selection recommendations only - it is the users responsibility to ensure the product is suitable for their specific application requirements.



PRESSURE TECH LTD

Unit 24, Graphite Way, Hadfield, Glossop, Derbyshire, UK, SK13 1QH

+44 (0)1457 899 307 | sales@pressure-tech.com | www.pressure-tech.com

DESIGNED, MANUFACTURED AND BUILT IN THE UK

© 2025 Pressure Tech Ltd. All Rights Reserved.

180225

PAGE:
2 OF 4

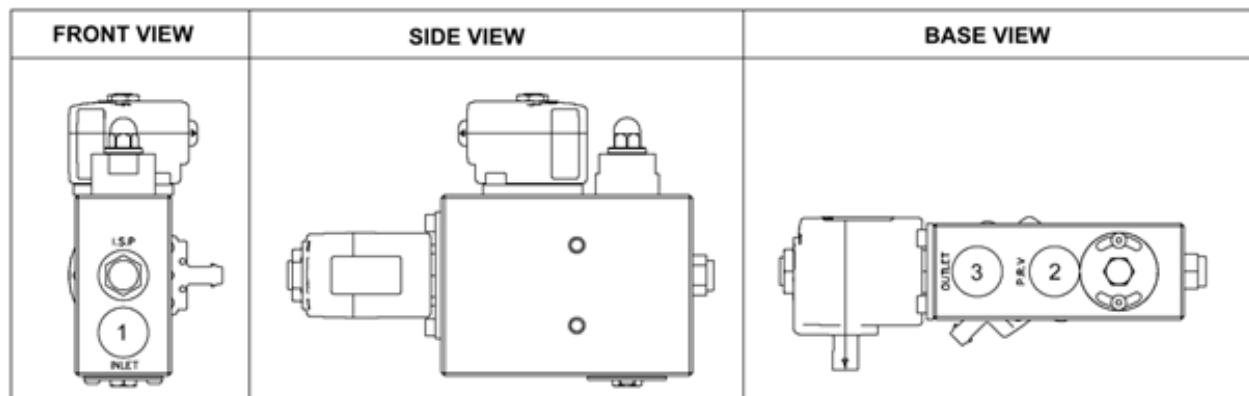
A875 Datasheet

PRESSURE REGULATOR FOR HYDROGEN VEHICLES

● Gas ● Liquid | ● Diaphragm ● Piston | ● Self-Venting ● Non-Venting | Max Inlet: 875 bar (12,690 psi) | Max Outlet: 30 bar (435 psi) | Cv 0.35 / 0.5

PORT POSITIONS

Use 'ORDERING INFORMATION' on page 4 to select connection size and type for each port position.



1. Inlet

2. Pressure Relief Valve
3. Outlet

FLOW CURVE

Please contact the office for further information.

Product availability and specifications contained herein are subject to change without notice. Consult local distributor or factory for potential revisions and/or service related issues.
Pressure Tech Ltd support with product selection recommendations only - it is the users responsibility to ensure the product is suitable for their specific application requirements.



PRESSURE TECH LTD

Unit 24, Graphite Way, Hadfield, Glossop, Derbyshire, UK, SK13 1QH

+44 (0)1457 899 307 | sales@pressure-tech.com | www.pressure-tech.com

DESIGNED, MANUFACTURED AND BUILT IN THE UK

© 2025 Pressure Tech Ltd. All Rights Reserved.

180225

PAGE:
3 OF 4

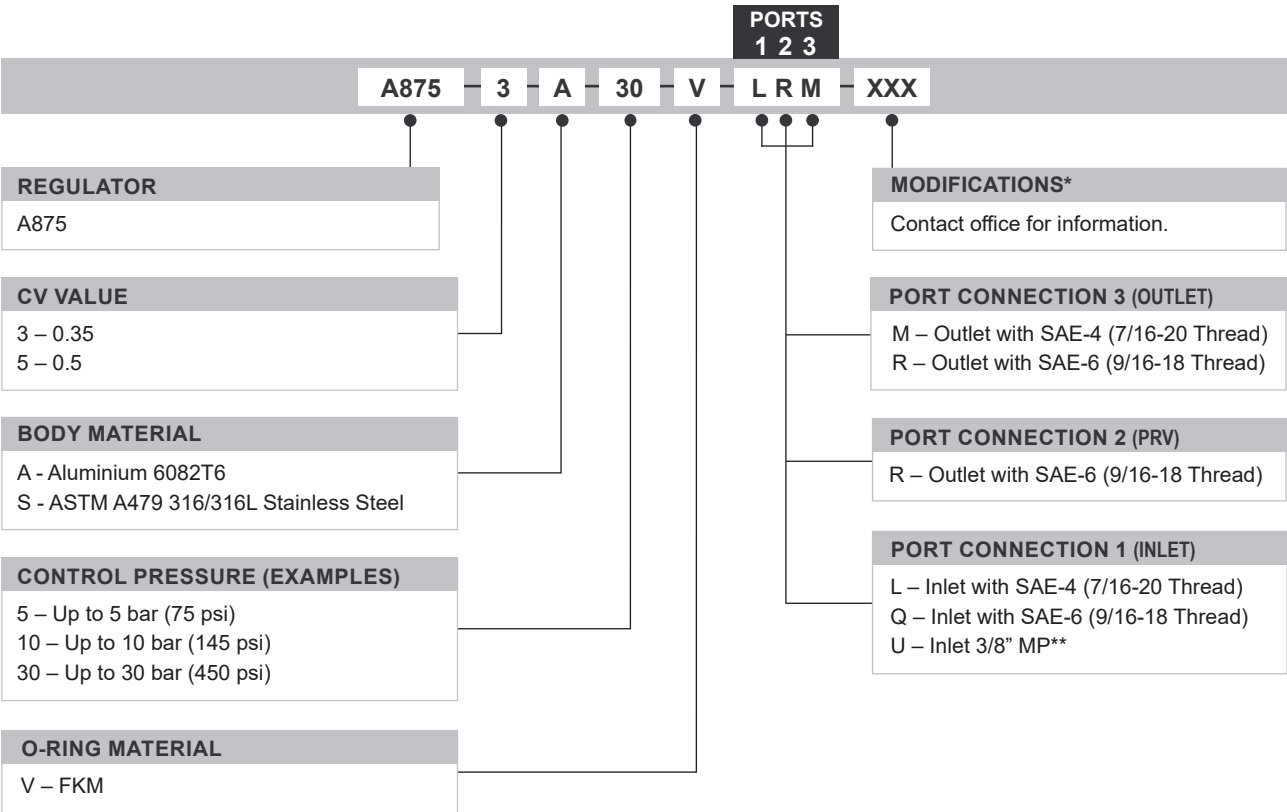
A875 Datasheet

PRESSURE REGULATOR FOR HYDROGEN VEHICLES

● Gas ● Liquid | ● Diaphragm ● Piston | ● Self-Venting ● Non-Venting | Max Inlet: 875 bar (12,690 psi) | Max Outlet: 30 bar (435 psi) | Cv 0.35 / 0.5

ORDERING INFORMATION

To build a Pressure Tech part number, simply combine the characters identified below in sequence:



OPTIONAL EXTRAS

	PART NUMBER	DESCRIPTION
Service Kit	SRK-A875...	A875 service kit.

Note: Ancillary equipment also available

* Where applicable

** Only available with 316/316L stainless steel body material

Product availability and specifications contained herein are subject to change without notice. Consult local distributor or factory for potential revisions and/or service related issues.
Pressure Tech Ltd support with product selection recommendations only - it is the users responsibility to ensure the product is suitable for their specific application requirements.



PRESSURE TECH LTD
Unit 24, Graphite Way, Hadfield, Glossop, Derbyshire, UK, SK13 1QH
+44 (0)1457 899 307 | sales@pressure-tech.com | www.pressure-tech.com
DESIGNED, MANUFACTURED AND BUILT IN THE UK
© 2025 Pressure Tech Ltd. All Rights Reserved.

180225

PAGE:
4 OF 4